

PR514 Women's 'Poppy' Healthcare Trousers

Description

Premier's 'Poppy' trouser has a cross over waistband with a two button fastening and zip for a comfortable trouser, suitable for long shifts in the Healthcare industry.

Product Features:

- Cross over waistband with two button fastening and zip fastening.
- Deep waistband
- Two slanted front pockets
- Belt loops
- Elasticated back waistband

Available In:

8, 10, 12, 14, 16, 18, 20, 22, 24

Certifications:

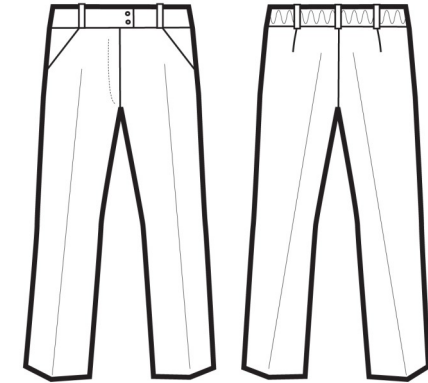


Colours:

| Colour | Pantone | C | M | Y | K |
|--------|---------|----|----|----|----|
| Navy | 533c | 95 | 72 | 15 | 67 |

Fabric:

65% Polyester, 35% Cotton Twill, 195gsm.



Suggested Decoration:

Screen Print, Transfer Print, Embroidery

Country of Origin:

Bangladesh

Commodity Code:

6204 62 1100

Features:



Wash Care:



Carton Information:

| Sizes | Carton | Pack | SKU's | Carton Weight | Carton Dimensions |
|-----------|--------|------|-------|---------------|-------------------|
| All Sizes | 24 | 6 | 9 | 12.2kg | 58cmx38cmx20cm |

Garment Sizes:

| Size | 8 | 10 | 12 | 14 | 16 | 18 | 20 | 22 | 24 |
|-----------------|----|----|----|----|----|----|-----|-----|-----|
| Waist to fit" | 24 | 26 | 28 | 30 | 32 | 34 | 36 | 38 | 40 |
| Waist to fit cm | 59 | 64 | 69 | 74 | 79 | 84 | 89 | 94 | 99 |
| Waist actual cm | 76 | 81 | 84 | 89 | 94 | 99 | 104 | 109 | 114 |
| DE,NL | 36 | 38 | 40 | 42 | 44 | 46 | 48 | 50 | 52 |
| FR,ES,PT | 36 | 38 | 40 | 42 | 44 | 46 | 48 | 50 | 52 |
| IT | 40 | 42 | 44 | 46 | 48 | 50 | 52 | 54 | 56 |